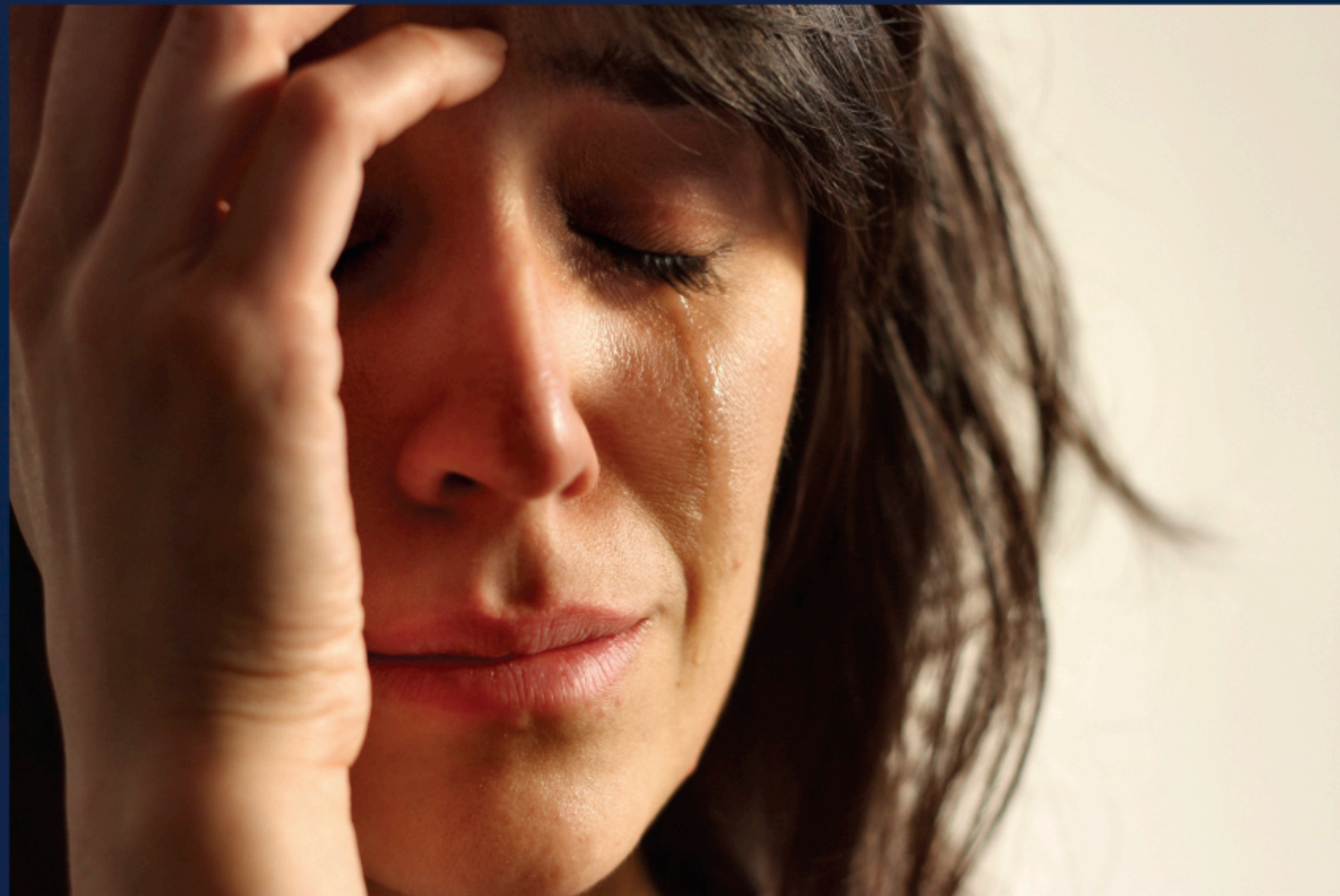


# Case #3: Fibromyalgia Complicated by Severe Cognitive Disorder, Migraines and Insomnia: Presentation, Diagnosis and Applications of Functional Neurology

Clinically Documented Case Studies, Dr. Gilbert Jaudy, DC, DACNB, FACFN, FABVR, FABCDD

contact: [info@DrJaudy.com](mailto:info@DrJaudy.com)



## Methods

The patient had undergone a comprehensive neurological examination at our facility using standard neurological tests and diagnostics. She had orthostatic blood pressure concomitance, global motor deficiencies, in addition to incoordination, cerebellar dysmetria, posterior center of pressure, freezing gait, hyperkinesia, frontal release sign, ocular dysmetria, poor gaze stabilization, and saccades.

Systemic Functional Neurology procedures and applications were implemented using various sensory and motor applications, coupled motion reductions, visual and auditory stimulation, cerebellar activation, complex therapeutic activities, home instructions, and various specific mitochondrial neurotraceuticals and phytonutrients. Various applications were administered on daily basis for 3 days.

## Results

By the end of the 3rd day most of the patient's symptoms and disorders, including her fibromyalgia, have resolved. Patient and her husband gave an emotional testimonial. The patient left symptom free.

## Background and Aims

The patient is a 41-year-old female who presented to our clinic on 10/12/2015 complaining of severe widespread body pain, cognitive issues, migraines and insomnia since 2001. She has had a past medical history of fractured bones, high blood pressure, eye pain, blurred vision, stiffness, headaches, dizziness, tremors, muscle cramps, mold poisoning, vertigo, depression, constipation, tremors, muscle spasms, rheumatoid arthritis, difficulty breathing, swollen joints, miscarriages, chest pain, belching, gas and digestive disorders. The patient saw 150 doctors since 2001 and was put on 50 medications. She reported extreme anxiety and an overall increase of symptoms.

